

Case study

ITH Pharma Ltd

Major private sector pharmacy manufacturing unit



Installation of 800m² mezzanine floor including two fire escape stair cases and a goods lift

The details

Our role:
Design and Build as Principle Contractor

Scope:
M&E + Construction

Facility type:
Manufacturing Pharmacy to cGMP Standards

Floor area:
2000m²

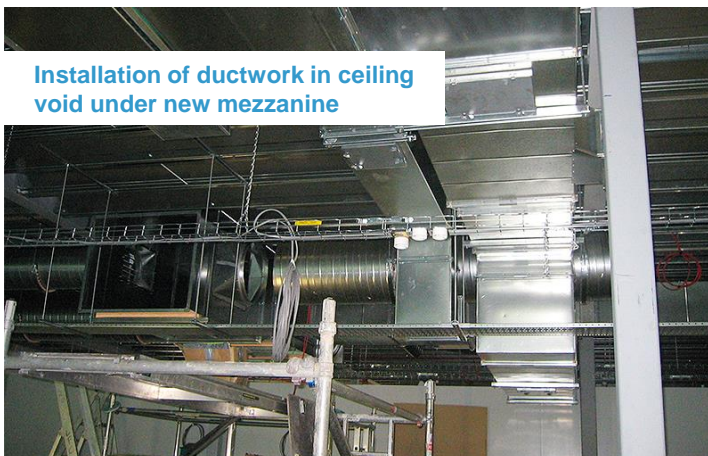
Contract value:
£2m

Programme:
Fast track 6 months from initial consultation to MHRA certification – completed on time

ITH Pharma came to Enbloc with a challenge: to build a new multi-million pound commercial pharmaceutical manufacturing facility within an existing, empty industrial unit in North West London in just a few months.

As main contractor, Enbloc designed and built the project, culminating in MHRA certification being awarded, in a total of just 6 months from initial concept. This included installing 800m² of mezzanine floor allowing the facility to have a duplicate of the ground floor on the 1st floor. The client then has the flexibility they need to process multiple products lines at the same time.

The facility comprises 6 Grade B cleanrooms both recirculating and full extract all with their own dedicated change rooms. These Grade B rooms are supported by a further 4 Grade D cleanrooms and 4 primary change areas. There are large packing areas on each floor and a full-height temperature controlled pharmaceutical warehouse with goods lift.



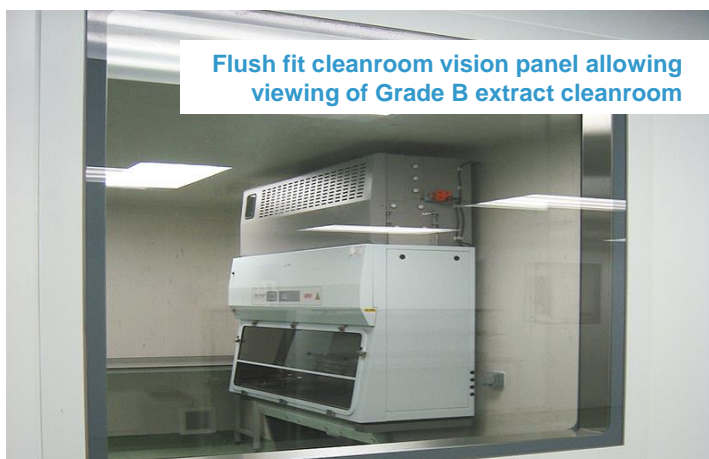
Installation of ductwork in ceiling void under new mezzanine



Constructing cleanroom panels over two floors

Case study

ITH Pharma Ltd



For more information on the clean facilities that Enbloc can offer please visit our website www.enbloc-cleanrooms.com or contact our head office on +44 (0)1252 626229 or email us at sales@enbloc-cleanrooms.com