



## ENBLOC ODG CLEAN AL LED

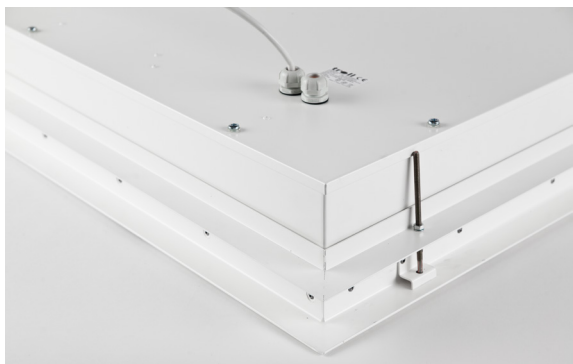
- Built-in luminaire designed for cleanrooms.
- Equipped with highly efficient LED light source.
- Special construction of the luminaire to allow access from above.

# ENBLOC ODG CLEAN AL LED

## Features

Body of the luminaire made of steel sheet powder coated in white. Diffuser made of hardened matt glass. Special construction of the luminaire allows opening it from the top. Thanks to this, maintenance can be done without contaminating facilities. Product is equipped in highly efficient LED light source. The colour temperature: 3000 K or 4000 K.

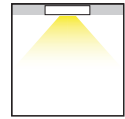
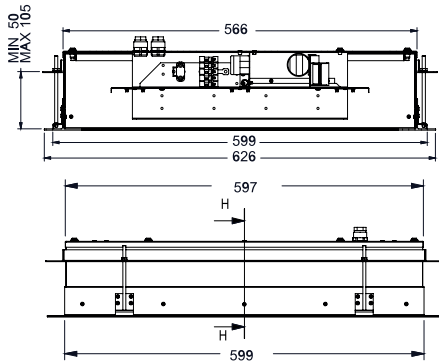
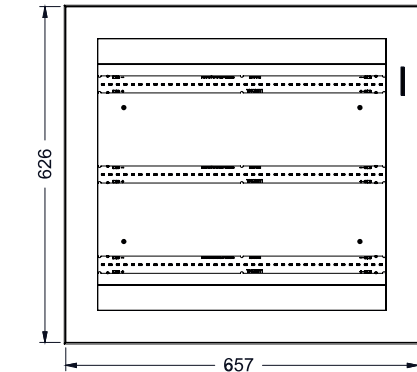
The luminaire recommended for pharmaceutical, electrical and chemical industry cleanrooms.



ENBLOC ODG  
CLEAN AL LED

ENBLOC ODG CLEAN AL LED

Dimensions



ENBLOC ODG CLEAN AL LED	47 W	LED	6600	5,70	
ENBLOC ODG CLEAN AL LED	62 W	LED	8800	5,70	

Available colour of the light

SDCM=3

Lifetime of LED sources - 60000 h (L70/B50)

Operating temperature range: 5° C - 30° C

The power shown refers to the whole system (tolerance +/- 10%).

The given luminous flux refers to LED light sources (tolerance +/- 10% depends on the value of the colour temperature).

Luminaire options

Diffuser:

SHM tempered matt glass

PLX PMMA opal diffuser

Micro-PRM micro-prismatic diffuser

Micro-PRM SH micro-prismatic diffuser with hardened glass / рассеиватель из микропризматического PMMA с калёным стеклом

Control gear:

E driver

EDD DIM DALI driver

Way of mounting

