



## Case History



**enbloc**  
clean facilities

**Client : NHS Airedale Trust**

Enbloc's Role Design and Build as Principle Contractor  
Scope Multidiscipline - M&E + Construction  
Facility Type Provision of Grade C Pharmacy Aseptic Suite  
Floor Area 270m<sup>2</sup>  
Contract Value £1m appx  
Programme 10 months December 07 to September 08

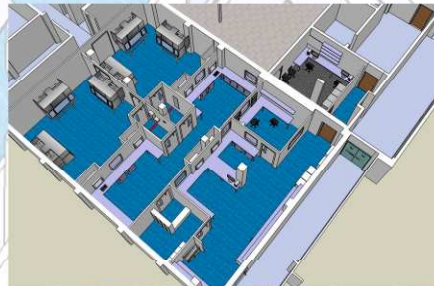
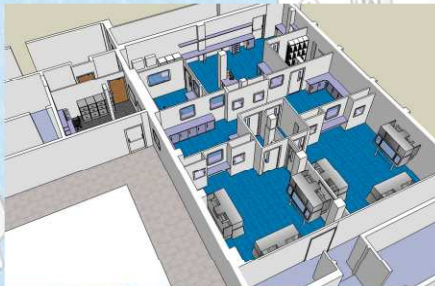
Completed on time

### Project Description :

A major project to build the Trust a new Pharmacy Aseptic Unit; the unit prepares a range of ready to use injectables used across a broad spectrum of patient care within its hospitals.

Enbloc won the contract by offering the best innovative design solution at a cost-effective price. By optimising space and work flow, Enbloc produced a design to improve output, thereby maximising economic efficiency.

The engineering of this project was a particular challenge due to the restrictive ceiling void and Enbloc had to use 3D modeling techniques to fit in the necessary ductwork services in the available space.



Images from 3D Model of facility



Toxic and non-toxic Grade C cleanroom



Inner support grade D with wall mounted LCD screens for viewing inside isolators



Coved vinyl floor finish



There are 2 isolators in each room 4 total and provision for a future isolator in each room

